

STANDARD DEPARTURE  
CHART - INSTRUMENT  
(SID)

TRANSITION ALTITUDE  
10000 FT

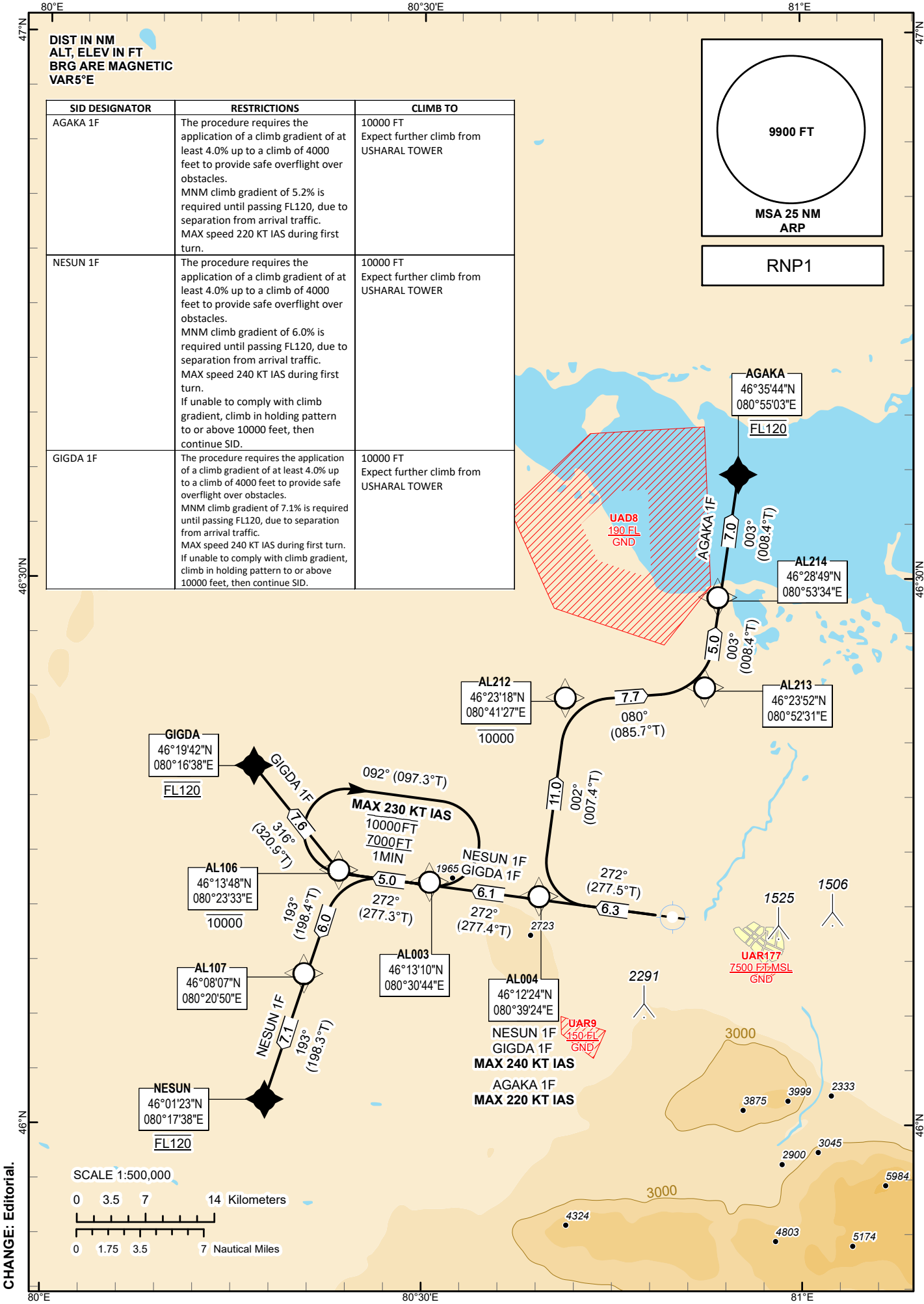
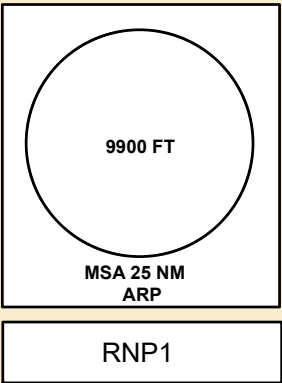
USHARAL TOWER 118.1

AGAKA 1F, GIGDA 1F,  
NESUN 1F

USHARAL  
RWY 27

DIST IN NM  
ALT, ELEV IN FT  
BRG ARE MAGNETIC  
VAR5°E

SID DESIGNATOR	RESTRICTIONS	CLIMB TO
AGAKA 1F	The procedure requires the application of a climb gradient of at least 4.0% up to a climb of 4000 feet to provide safe overflight over obstacles. MNM climb gradient of 5.2% is required until passing FL120, due to separation from arrival traffic. MAX speed 220 KT IAS during first turn.	10000 FT Expect further climb from USHARAL TOWER
NESUN 1F	The procedure requires the application of a climb gradient of at least 4.0% up to a climb of 4000 feet to provide safe overflight over obstacles. MNM climb gradient of 6.0% is required until passing FL120, due to separation from arrival traffic. MAX speed 240 KT IAS during first turn. If unable to comply with climb gradient, climb in holding pattern to or above 10000 feet, then continue SID.	10000 FT Expect further climb from USHARAL TOWER
GIGDA 1F	The procedure requires the application of a climb gradient of at least 4.0% up to a climb of 4000 feet to provide safe overflight over obstacles. MNM climb gradient of 7.1% is required until passing FL120, due to separation from arrival traffic. MAX speed 240 KT IAS during first turn. If unable to comply with climb gradient, climb in holding pattern to or above 10000 feet, then continue SID.	10000 FT Expect further climb from USHARAL TOWER



CHANGE: Editorial.

TABULAR DESCRIPTION

SID AGAKA 1F RWY 27									
Serial Number	Path Desc.	Waypoint Identifier	Fly - over	Course °M(°T)	DIST (nm)	Turn Dir	Altitude FT	Speed KT	NAV. SPEC.
010	CF	AL004	-	272(277.5)	6.3		-	-220	RNP1
020	TF	AL212	-	002(007.4)	11.0		-10000		RNP1
030	TF	AL213	-	080(085.7)	7.7				RNP1
040	TF	AL214	-	003(008.4)	5.0				RNP1
050	TF	AGAKA	-	003(008.4)	7.0		@FL120		RNP1

WAYPOINT LIST

AGAKA 1F			
Waypoint Identifier		Coordinates	
DEP		461134.36N	0804826.33E
AL004		461223.68N	0803923.96E
AL212		462317.94N	0804126.86E
AL213		462352.00N	0805230.65E
AL214		462848.67N	0805333.99E
AGAKA		463544.00N	0805503.00E

TABULAR DESCRIPTION

SID NESUN 1F RWY 27									
Serial Number	Path Desc.	Waypoint Identifier	Fly - over	Course °M(°T)	DIST (nm)	Turn Dir	Altitude FT	Speed KT	NAV. SPEC.
010	CF	AL004	-	272(277.5)	6.3		-	-240	RNP1
020	TF	AL003	-	272(277.4)	6.1				RNP1
030	TF	AL106	-	272(277.3)	5.0		-10000		RNP1
040	TF	AL107	-	193(198.4)	6.0				RNP1
050	TF	NESUN	-	193(198.3)	7.1		@FL120		RNP1

WAYPOINT LIST

NESUN 1F			
Waypoint Identifier		Coordinates	
DEP		461134.36N	0804826.33E
AL004		461223.68N	0803923.96E
AL003		461310.24N	0803044.24E
AL106		461348.35N	0802333.15E
AL107		460806.76N	0802050.04E
NESUN		460123.00N	0801738.00E

TABULAR DESCRIPTION

SID GIGDA 1F RWY 27									
Serial Number	Path Desc.	Waypoint Identifier	Fly - over	Course °M(°T)	DIST (nm)	Turn Dir	Altitude FT	Speed KT	NAV. SPEC.
010	CF	AL004	-	272(277.5)	6.3		-	-240	RNP1
020	TF	AL003	-	272(277.4)	6.1				RNP1
030	TF	AL106	-	272(277.3)	5.0		-10000		RNP1
040	TF	GIGDA	-	316(320.9)	7.6		@FL120		RNP1

WAYPOINT LIST

GIGDA 1F			
Waypoint Identifier		Coordinates	
DEP		461134.36N	0804826.33E
AL004		461223.68N	0803923.96E
AL003		461310.24N	0803044.24E
AL106		461348.35N	0802333.15E
GIGDA		461942.00N	0801638.00E